



### Cart Placement

- The arrows on the lid of the cart must point to the street
- Handles and wheels should face away from the street
- The garbage cart should be placed within 2 ft. of the street on one side of the driveway
- The recycle cart should be placed within 2 ft. of the street on the other side of the driveway
- Please keep 3 ft. of clearance between the carts and other objects, especially mailboxes and vehicles



## Town of Fond Du Lac Trash and Recycling Collection Services

### Reduce, Reuse, Recycle

- Reduce paper waste by using both sides of the paper and using scrap paper whenever possible
- When shopping, reuse canvas, paper or plastic bags to bring home purchases
- Recycle as much waste as you can by following the guidelines on the next page

**Garbage collection is every week. Please place the following items in your trash cart:**

- Mixed trash
- Bagged garbage/ food waste
- Ceramics
- Styrofoam and other loose trash



N7296 County Road V  
Horicon, WI, 53032  
920.387.0987

Green Today. Green For Life. | [gflenv.com](http://gflenv.com)



N7296 County Road V  
Horicon, WI, 53032  
920.387.0987

Green Today. Green For Life. | [gflenv.com](http://gflenv.com)

Recycling collection is bi-weekly (every other week).  
Please place the following items in your recycle cart:

### Mixed Containers

Please do not put recycling in plastic bags.

- Aluminum cans and clean aluminum foil
- Tin cans, steel cans, aerosol cans, empty/ dried paint cans
- Glass bottles and jars
- #1, #2, and #5 type plastics
- Milk cartons, juice boxes, soup cartons

### Mixed Paper

**PLEASE DO NOT PUT RECYCLING IN PLASTIC BAGS.**

- Newspaper, magazines, books, mail, school/ office paper
- Brown corrugated cardboard
- Gray chipboard (cereal and shoe boxes)
- Brown paper bags

### DO NOT put the following items in the recycle cart:



- Plastic bags
- Styrofoam of any kind
- Trash
- Construction material
- Clothing
- Yard waste
- Household hazardous waste
- Electronics
- Shredded paper (loose or bagged)

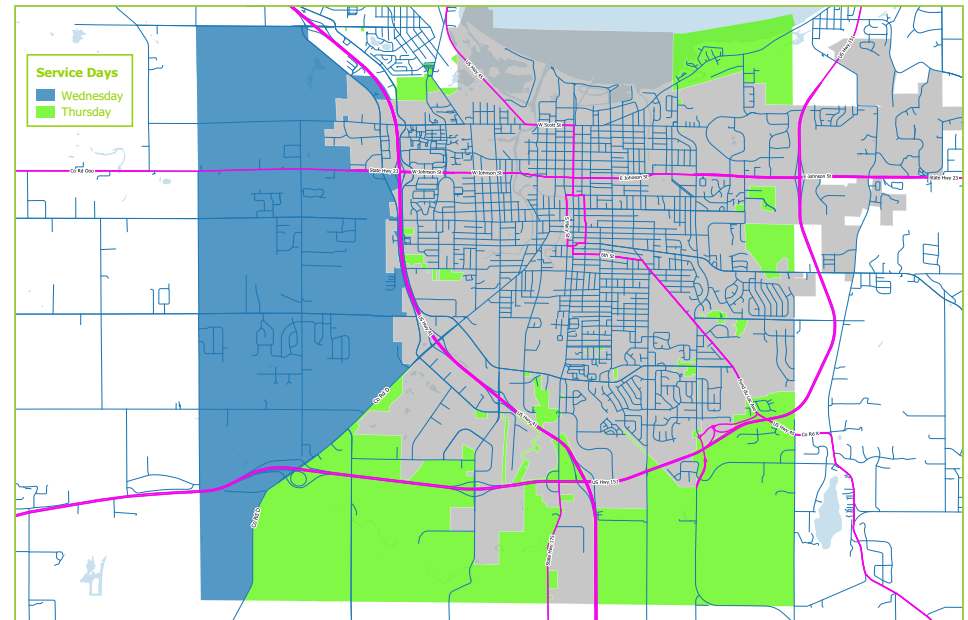
Local clean sweep programs may offer alternative options for disposal of fluorescent light bulbs, household hazardous waste, pharmaceuticals, and electronics.



10% post-consumer recycled paper

# TOWN OF FOND DU LAC TRASH AND RECYCLING COLLECTION CALENDAR

If you are in need of an additional container for trash or recycling collection, please contact GFL directly to arrange for payment and delivery of cart(s).



2023

TRASH ONLY TRASH & RECYCLING HOLIDAYS

Month	S	M	T	W	T	F	S
<b>January</b>							
	1	2	3	4	5	6	7
	8	9	10	11	12	13	14
	15	16	17	18	19	20	21
	22	23	24	25	26	27	28
	29	30	31				
<b>February</b>							
				1	2	3	4
	5	6	7	8	9	10	11
	12	13	14	15	16	17	18
	19	20	21	22	23	24	25
	26	27	28				
<b>March</b>							
				1	2	3	4
	5	6	7	8	9	10	11
	12	13	14	15	16	17	18
	19	20	21	22	23	24	25
	26	27	28	29	30	31	
<b>April</b>							
							1
	2	3	4	5	6	7	8
	9	10	11	12	13	14	15
	16	17	18	19	20	21	22
	23	24	25	26	27	28	29
	30						
<b>May</b>							
				1	2	3	4
	5	6	7	8	9	10	11
	12	13	14	15	16	17	18
	19	20	21	22	23	24	25
	26	27	28	29	30	31	
<b>June</b>							
						1	2
	3	4	5	6	7	8	9
	10	11	12	13	14	15	16
	17	18	19	20	21	22	23
	24	25	26	27	28	29	30
<b>July</b>							
							1
	2	3	4	5	6	7	8
	9	10	11	12	13	14	15
	16	17	18	19	20	21	22
	23	24	25	26	27	28	29
	30	31					
<b>August</b>							
				1	2	3	4
	5	6	7	8	9	10	11
	12	13	14	15	16	17	18
	19	20	21	22	23	24	25
	26	27	28	29	30	31	
<b>September</b>							
							1
	2	3	4	5	6	7	8
	9	10	11	12	13	14	15
	16	17	18	19	20	21	22
	23	24	25	26	27	28	29
	30						
<b>October</b>							
							1
	2	3	4	5	6	7	8
	9	10	11	12	13	14	15
	16	17	18	19	20	21	22
	23	24	25	26	27	28	29
	30	31					
<b>November</b>							
							1
	2	3	4	5	6	7	8
	9	10	11	12	13	14	15
	16	17	18	19	20	21	22
	23	24	25	26	27	28	29
	30						
<b>December</b>							
							1
	2	3	4	5	6	7	8
	9	10	11	12	13	14	15
	16	17	18	19	20	21	22
	23	24	25	26	27	28	29
	30	31					

Please have bins out curbside the night prior to your scheduled collection day. If not possible, bins MUST be placed at curbside no later than 6 AM or they may not be picked up.

For cart repair or to report missed pick-ups, please contact GFL directly.

**920-387-0987**